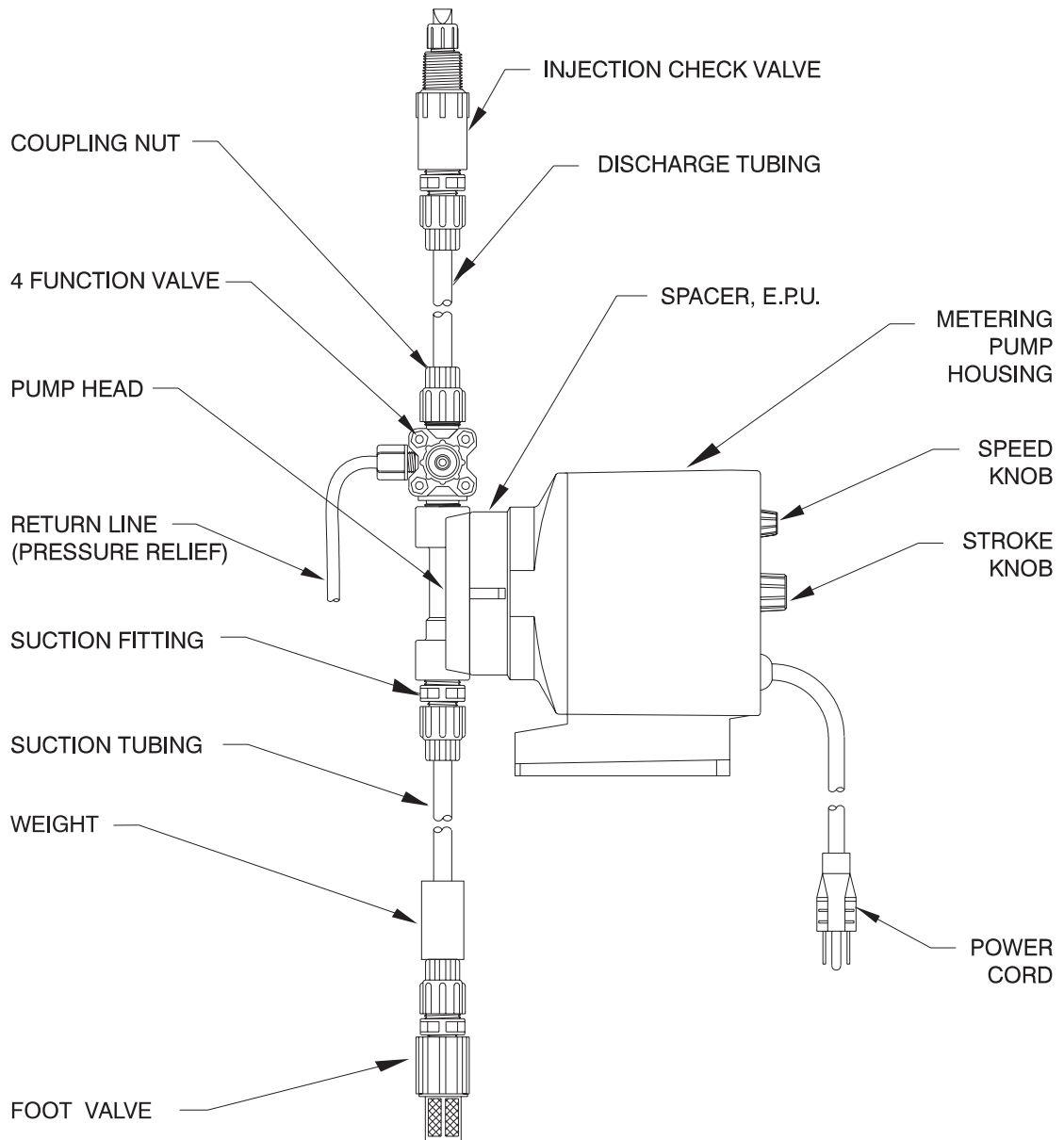


Instruction Supplement

Series P1

Electronic Metering Pump



Metering Pump Component Diagram



201 Ivyland Road
Ivyland, PA 18974 USA
TEL: (215) 293-0401
FAX: (215) 441-8620
<http://www.lmipumps.com>



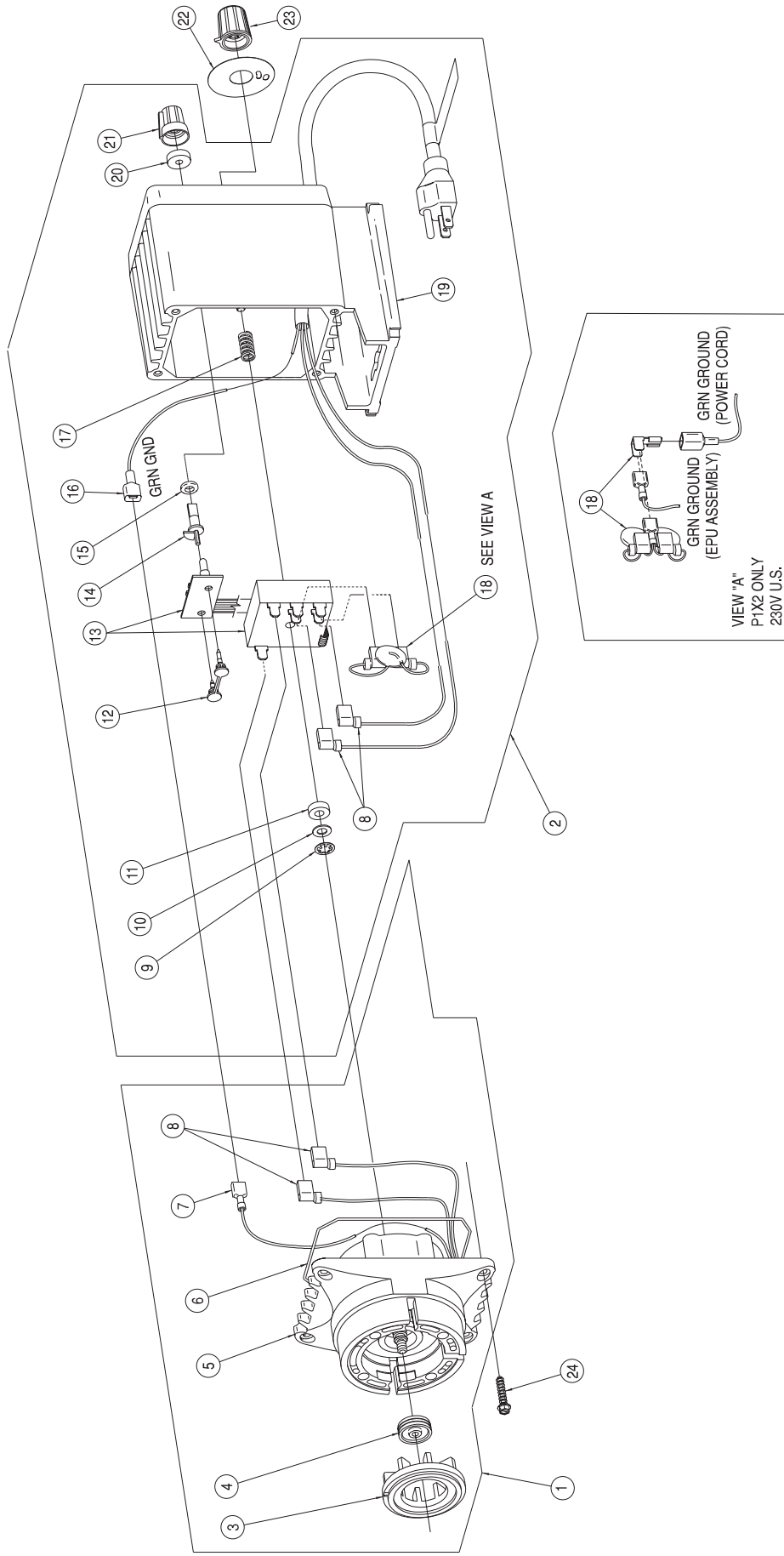
Replaces same of Rev. B 2/00
1842. C 2/03

Series P1 Drive Assembly Parts List

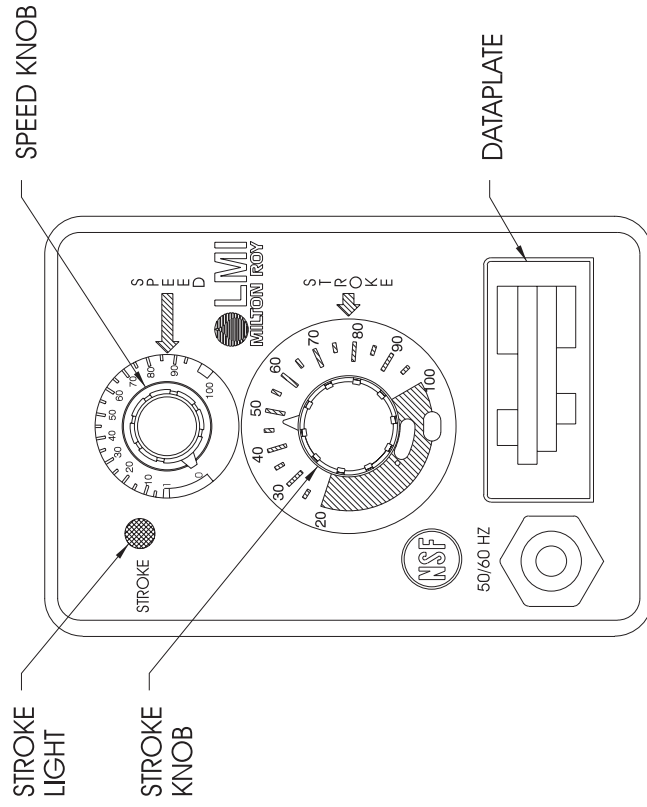
KEY NO	MODEL	PART NO	DESCRIPTION	QTY		
1	P121 P123, P125, P127 P131 P133, P135, P137 P141 P143, P145, P147 P151 P153, P155, P157 P161 P163, P165, P167	30107CE	EPU W/DISK 0.5	1		
		30108CE	EPU W/DISK 0.5	1		
		30109CE	EPU W/DISK 0.9	1		
		30110CE	EPU W/DISK 0.9	1		
		30240CE	EPU W/DISK 0.5	1		
		30241CE	EPU W/DISK 0.5	1		
		30242CE	EPU W/DISK 0.9	1		
		30243CE	EPU W/DISK 0.9	1		
		33338CE	EPU W/DISK 1.8	1		
		31781CE	EPU W/DISK 1.8	1		
		2	P121, P131 P123, P133 P125, P135 P127, P137 P141, P151, P161 P143, P153, P163 P145, P155, P165 P147, P157, P167	36749	HOUSING ASSEMBLY W/PULSER, 115V	1
				36750	HOUSING ASSEMBLY W/PULSER, 230V DIN	1
				36751	HOUSING ASSEMBLY W/PULSER, 240V UK	1
				36752	HOUSING ASSEMBLY W/PULSER, 230V SWISS	1
				36734	HOUSING ASSEMBLY W/PULSER, 115V	1
				36742	HOUSING ASSEMBLY W/PULSER, 230V DIN	1
				36743	HOUSING ASSEMBLY W/PULSER, 240V UK	1
36744	HOUSING ASSEMBLY W/PULSER, 230V SWISS			1		
3	P12, P14 P13, P15 P16			29445	DISK, 0.5	1
				29437	DISK, 0.9	1
				29442	DISK, 1.8	1
4	P1	10973	SEAL	1		
5	P121, P131 P123, P125, P127 P133, P135, P137 P141, P151 P143, P145, P147 P153, P155, P157 P161 P163, P165, P167	30530CE	EPU	1		
		30531CE	EPU	1		
		30531CE	EPU	1		
		30154CE	EPU	1		
		30155CE	EPU	1		
		30155CE	EPU	1		
		31862CE	EPU	1		
		31131CE	EPU	1		
		6	P1	10166	O-RING	1
				35189	WIRE TERMINAL (FEMALE)	1
35190	WIRE TERMINAL (FLAG)			4		
9	P1	10422	RETAINING RING	1		
10	P1	25963	WASHER, NYLON	1		
11	P1	30391	WASHER, RUBBER	1		
12	P1	35744	DUAL PIN	1		
13	P1	36255	PULSER	1		

Key No.	Model	PART No.	Description	Qty.
14	P1	35743	SPEED SHAFT	1
15	P1	34497	O-RING	1
16	P1	35188	WIRE TERMINAL (MALE)	1
17	P1	25414	SPRING	1
18	P121, P131, P141, P151, P161 P123, P133, P143, P153, P163 P125, P135, P145, P155, P165 P127, P137, P147, P157, P167	35243	MOV/CAP ASM, 115V	1
		35237	MOV/CAP ASM, 230V	1
		35237	MOV/CAP ASM, 230V	1
		35237	MOV/CAP ASM, 230V	1
		36797	HOUSING ASSEMBLY, 115V	1
19	P123, P133, P143, P153, P163 P125, P135, P145, P155, P165 P127, P137, P147, P157, P167	36798	HOUSING ASSEMBLY, 230V DIN	1
		36799	HOUSING ASSEMBLY, 240V UK	1
		36800	HOUSING ASSEMBLY, 230V SWISS	1
		30803	GASKET	1
21	P1	30709	SPEED KNOB	1
22	P12 P13 P16	30418	STROKE DIAL	1
		31545	STROKE DIAL	1
		31127	STROKE DIAL	1
23	P1	30295	STROKE KNOB	1
		30306	SCREW	4

Series P1 Drive Assembly Exploded View Diagram



Series P1 Control Panel Detail



Series P1 Wiring Diagram

